

THE CRICKET COLLECTION



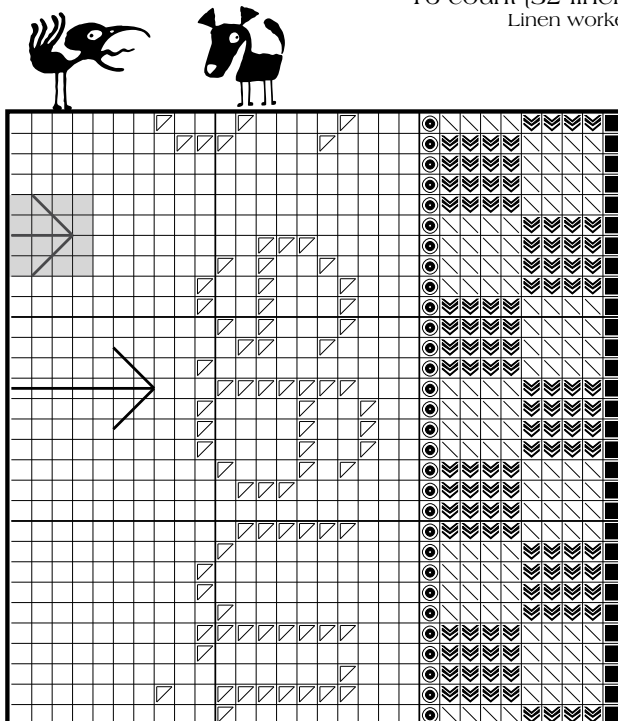
CORRECTION ALERT! It is with deep regret that we must ask your patience with the following error on the graph for Number 340 entitled "Tapestry Blooms." While the Design Area information is correct, the arrows on the graph are placed incorrectly. The two correction charts below indicate the correct placement. The long arrows show the location for the correct center. We never understand how such errors occur. Each design goes through multiple proofings following an extensive check list...but the gremlins are very sneaky and willfully work their wiles despite our efforts. Again, we apologize for any inconvenience and hope that this error doesn't lessen your enjoyment when working the design.



"TAPESTRY BLOOMS"

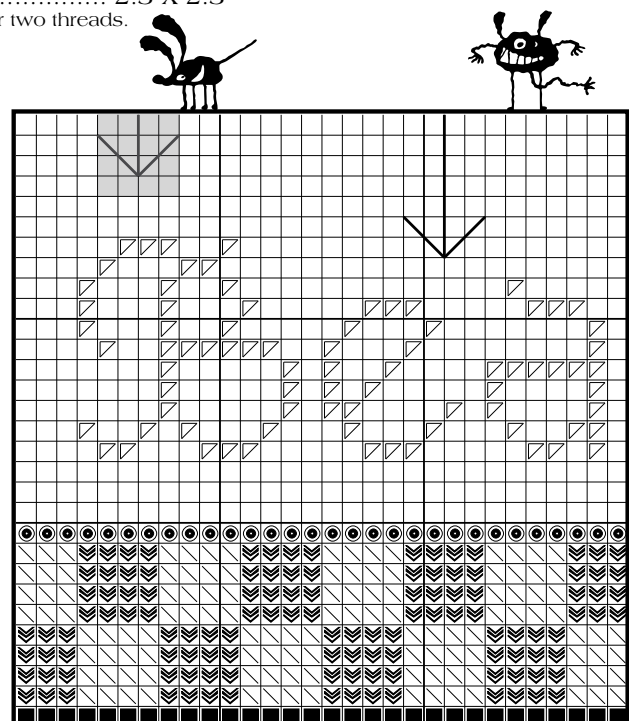
Number 340

DESIGN AREA 36W X 36H
 14 count (28 linen)..... 2.6 X 2.6
 15 count (30 linen)..... 2.4 X 2.4
 16 count (32 linen)..... 2.3 X 2.3
 Linen worked over two threads.



Vertical Centering Arrow

The LONG arrow indicates the vertical center of the design. Incorrect arrow is grayed.



Horizontal Centering Arrow

The LONG arrow indicates the horizontal center of the design. Incorrect arrow is grayed.

